



SUTHERLAND SHIRE ART SOCIETY

# NEWSLETTER

JUNE–JULY 2019 EDITION

## President's Report

We have had a very successful year so far. We survived the art show and sold 27 paintings.

Since then we have had several new members and painting in the hall has been full of people trying all sorts of things—we have sketching, watercolour and acrylic artists, several tutorials and demonstrations and everybody is happy.

### Paintings at the Opera

I'm organising our Japanese Exhibition for the foyer of the Rockdale Opera Company's production of *The Mikado*, a new challenge to most of us but an interesting subject – see below.

Who knows what will be next.

### Open Day : Sat 27 July

The open day is organised and we hope you all bring somebody along other than your family to enjoy the fun—after all its a party for everyone.

As usual you will have half a table to share with somebody to display your paintings. No charge. Have some change in your pocket in case you need it.

Entertainment has been arranged but we are asking for you to bring a plate along this time.

We will have a raffle to cover the costs and Bill is going to have a display of his jewellery in the foyer.

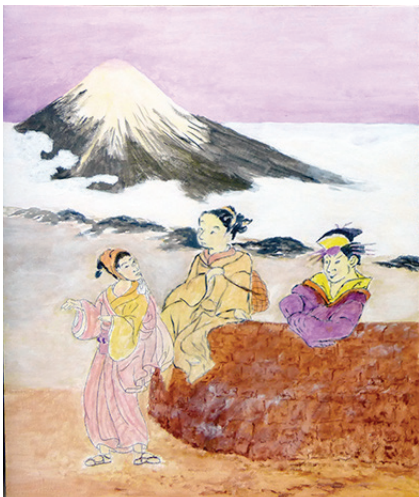
### Christmas Party

Lyn has the Christmas Party organised and she has a list for you to jot your name down! Our sponsor, Club Menai, has generously donated the room hire for our celebration and we appreciate their on-going support of our society.

### Annual General Meeting

September is the AGM and that's when we get to vote for a new committee of helpers, who we should thank very much—they keep the society going.

*Beverley Theodore*  
President



**PAINTING IN THE HALL • NEW TIMES**

**12 noon to 3.30 pm**

**SUTHERLAND SHIRE  
ART SOCIETY INC.**

ABN 47 096203 925

Postal address  
**PO Box 255, Jannali 2226**

Website  
[www.shireart.com](http://www.shireart.com)

**Patron**  
Otto Kuster

**COMMITTEE**  
**President**  
Beverley Theodore  
9532 1141

**Vice President**  
Yvonne Biggs

**Secretary**  
Jenny Heslehurst  
0425 206 996

**Treasurer**  
Peter Theodore

**Committee Members**  
Valda Burtenshaw  
Debbie Manwarring  
Lyn Pieterse

**Plein Air Painting**  
Beverley Theodore  
9532 1141

**Public Officer**  
Lyn Pieterse

**Life Member**  
Gwen Powning

**Newsletter**  
**Diane Pattinson**  
**Copy Deadlines**

Please send 2019 items to :  
dianepat@icloud.com  
by 18 Feb, 10 April, 17 June,  
19 August, 18 October

# Meeting Updates

A few items from recent meetings.

**BYO Mug :** We will be phasing out styrofoam cups for afternoon tea/coffee service. Please bring your own cup/mug to each meeting and painting in the hall.

**Table Covers :** Don't forget to bring plastic covers for your painting tables when participating in painting in the hall.

## Demonstration Breaks

We will now break at 2pm for afternoon tea. Please resume your seats by 2.15pm to allow the demonstrator to finalise the session.

**Mini Workshops :** We intend to tie-in the subject of some of our mini-workshops with the subject scheduled for a future People's Choice display.

# Art History

## Grandma Moses

Real name was Anna May Robertson Moses. Born 7 September 1860 and died 13 December 1961. She married Thomas S Moses in 1887. Thomas died in 1937.

In her early life she worked as a domestic both on a farm and in the farmhouse. She loved embroidery but when she reached 76 years of age her hands were too arthritic to continue and she turned again to painting.

She loved art from a very early age and had art lessons at school but her painting life was very sporadic and it was not until she was 78 that she returned seriously to her first love.

Grandma Moses was 'discovered' by Louis Caldor, an engineer who bought every painting he could find at the time, mostly for sums in the region of three to four dollars each.

Her first exhibition was held in 1940 at Otto Kalle's Gallery at St Etienne (New York) and was followed up in November where 50 paintings were placed on show in Gimbles Department store.

Her paintings were made in what is called the Naïve style painted either on heavy cardboard or masonite about 24 x 30 inches and from the beginning of her serious art career brought prices well in excess of \$10,000 and many now sell well into the millions at auction.

*Peter Theodore*



Fireboard decorated by Moses in 1918

## PORCELAIN PAINTING EQUIPMENT

**- Free to good home -**

**Please contact Marlene on 0405 405 234  
for more information.**

# Peoples Choice

## May : Buildings



Adele Wright



Len Hodge



Adele Wright

## June : Kitchen Scene



Len Hodge



Burt Griffiths



Beverly Theodore

# Demonstrations

May 2019 – Margaret Looney

June 2019 – Norma Jones



# Art Show



Len Hodge and Sandra O'Connor, demonstrators at our recent art show,

# Calendar

Please check the notice board displayed in the hall  
at each meeting, for the society's  
up-to-date calendar and any changes.

## OPEN DAY

Saturday 27 July • Noon to 4.00 pm  
Loftus Community Hall

Displays • Entertainment • Afternoon Tea



## Membership Renewal

**Your art society membership is due for renewal in July.**

Treasurer Peter Theodore will be happy to accept your renewal payment, to ensure you don't miss out on all the great activities planned for the next year.

Please note that credit card payments can now be accepted.

## WHAT'S ON

### Hazelhurst

**Otto Kuster & Remy Lorken :**  
the art of palette knife painting

13 June – 11 August

[sutherlandshire.nsw.gov.au/  
Community/Hazelhurst/Exhibitions](http://sutherlandshire.nsw.gov.au/Community/Hazelhurst/Exhibitions)

### National Gallery of Australia

[nga.gov.au/exhibitions](http://nga.gov.au/exhibitions)

## ON THE INTERNET

**Experimental Landscapes in Watercolour – Ann Blockley**

DVD preview

[youtube.com/watch](https://www.youtube.com/watch)  
and Pinterest collection

[pinterest.com.au/](https://www.pinterest.com.au/)



Please  
support  
our  
sponsors



[www.at-your-service.com.au/](http://www.at-your-service.com.au/)

