



SUTHERLAND SHIRE ART SOCIETY

NEWSLETTER

FEBRUARY–MARCH 2021 EDITION

President's Report

GREAT NEWS!

Our Art Show is returning on Monday 17 May and running through to Sunday 23 May. After missing out last year due to Covid 19 we are back!

It means that we have to ensure that we have a good range of superior-quality artworks to display and hopefully sell. Speaking in real terms we have a little over 2 months to complete our works. This also means that your committee has only two months to prepare the show, so it is all hands to the wheel to ensure that the exhibition will continue the success we have enjoyed over the past several years.

It was gratifying to have such a good roll-up to our first get together on 3 February, followed up by good numbers the following Wednesday. Let's keep the enthusiasm going and continue strengthening our Society.

Portraiture Workshop

Do you realise that it is over twelve months since we have had a workshop? Well that is about to change. On the last Wednesday in March, the 31st, we will be having a Portraiture Workshop run by our friend

Hettie Rowley, who is a fine portraitist in her own right and she will be passing on her skills/tips to those people who join the workshop; remember numbers are limited and it will be full hands-on painting.

For those who may not have attended a workshop it needs to be understood that this is not a demonstration as we have at our General Meetings on the first Wednesday of each month; you will be painting and Hettie will be working basically on a one-on-one basis.

Television

We have identified a need for a new TV for our demonstration days. The one we currently use was fine many years ago but peoples' expectations these days are quite different. Upgrading our TV is easy but this poses a storage problem. We are looking at two sizes. My preference is for a 65-inch TV, which will not fit any of our cabinets. The second option is a 50-inch which will probably fit. A 65-inch sounds very large and if it were going into a lounge room quite

Continued page 2



MARCH

Sarah Rowan – Speed Painting • Peoples Choice – Footwear

APRIL

Norma Jones – Charcoal • Peoples Choice – Seascape

**SUTHERLAND SHIRE
ART SOCIETY INC.**

ABN 47 096203 925

Postal address
PO Box 255, Jannali 2226

Website
www.shireart.com

Patron
Otto Kuster

COMMITTEE

President
Peter Theodore
0447 295 527

Vice President
Yvonne Biggs
9522 2644 • 0412632862

Secretary
Jenny Heslehurst
0425 206 996

Treasurer
Peter Theodore

Committee Members

Valda Burtenshaw
Vickie Craven
Debbie Manwarring
Carolynne Martin
Lyn Pieterse

Public Officer
Lyn Pieterse

Life Member
Gwen Powning

Newsletter
Diane Pattinson
Copy Deadlines

Please send 2021 items to :
dianepat@icloud.com
by 15 Feb, 19 April, 21 June,
16 August, 18 October

President's Report *continued from Page 1*

possibly would be overbearing, but in our hall we need every inch we can get. How to solve this challenge? Do we have a handyman in our group? Why? Because it seems we are going to have to build a secure cupboard to house the new TV. If you, whoever that may be, can put

something together then please speak to me.

Members, please continue painting and enjoying the companionship of the members of our society. Let us continue to march in the direction of on ...

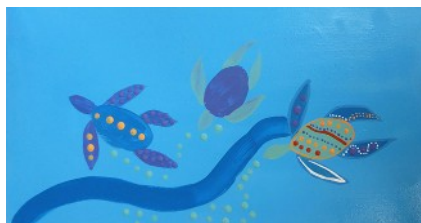
Peter Theodore, President

Demonstration

For our first 2021 meeting in February, Amy Lea demonstrated the techniques and ideas that indigenous painters use.

Visit Amy's website and social media page to enjoy other examples of her work.

dewrangart.com.au/
Phone : 0402 493 443
Facebook : Dewrangart



Monthly Exhibition & Demonstration

1st Wednesday of the month February through November,
12.00 noon – 3.30pm

at the Community Hall, 129R Loftus Avenue, Loftus.

Please arrive by noon to enter your exhibits and lodge your Peoples Choice vote before the meeting starts, and we can start our demonstration at 12.30 pm.

Painting in the Hall

2nd, 3rd & 4th Wednesday Loftus Community Hall,
12 noon – 3.30pm.

Please come along and join our fun members, have some afternoon tea and exchange ideas with other artists. Own Choice painting and/or an occasional special class (refer our website for details)

5th Wednesday When this occurs there is no regular Painting in the Hall. An occasional social outing or special workshop may be organised for those days.

Vale John Newton

John Newton was a man who will be sadly missed by all his friends, and he had many in our society. He loved photography which was the first priority after his family.

Along with his painting, although I always felt his greatest interest in our society was being able to have regular contact with his daughter Sandra.

John was very well known in the photographic world and spent

a great deal of his, shall we say, free time travelling this state to act as a judge of photographic competitions.

Speaking from my own point of view, all I ever had to do was to say I needed help with anything, whether it was help in moving a table, taking a photograph or anything else, John always was immediately at my side and be the first to offer his help.

John's illness came on very sud-

denly. Unhappily we, as a group were unable to join him over the last period of his life, due to the restrictions imposed due to the Corona virus which did not allow anybody outside of his immediate family to have contact with him.

I, on behalf of our society, extend the society's expressions of sincere regrets to John's family.

He will be most sorely missed by us all.

Peter Theodore, President

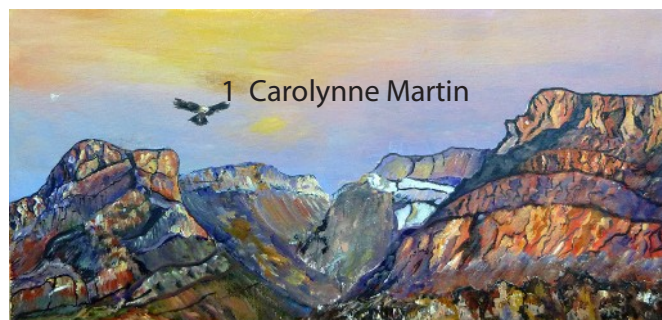


Peoples Choice

February – Mountains



1 Carolynne Martin



1 Carolynne Martin

2 Patricia Zoppi



3 Marion Pender

Christmas 2020



Please support our sponsors



1800 737 838

1965 - 2015 AUSTRALIAN OWNED



eckersley's
ART & CRAFT

FOR ALL YOUR ART NEEDS CALL 9524 7878

Gillian Travers



Mobile Podiatrist
0405 303 256



Menai District
PHYSIOTHERAPY

273 Fowler Rd Illawong 2234
Ph: 9543 0199



Kookaburra
AIR CONDITIONING

9543 9787 • 0434 675 159